

# CWKtiny Assembly

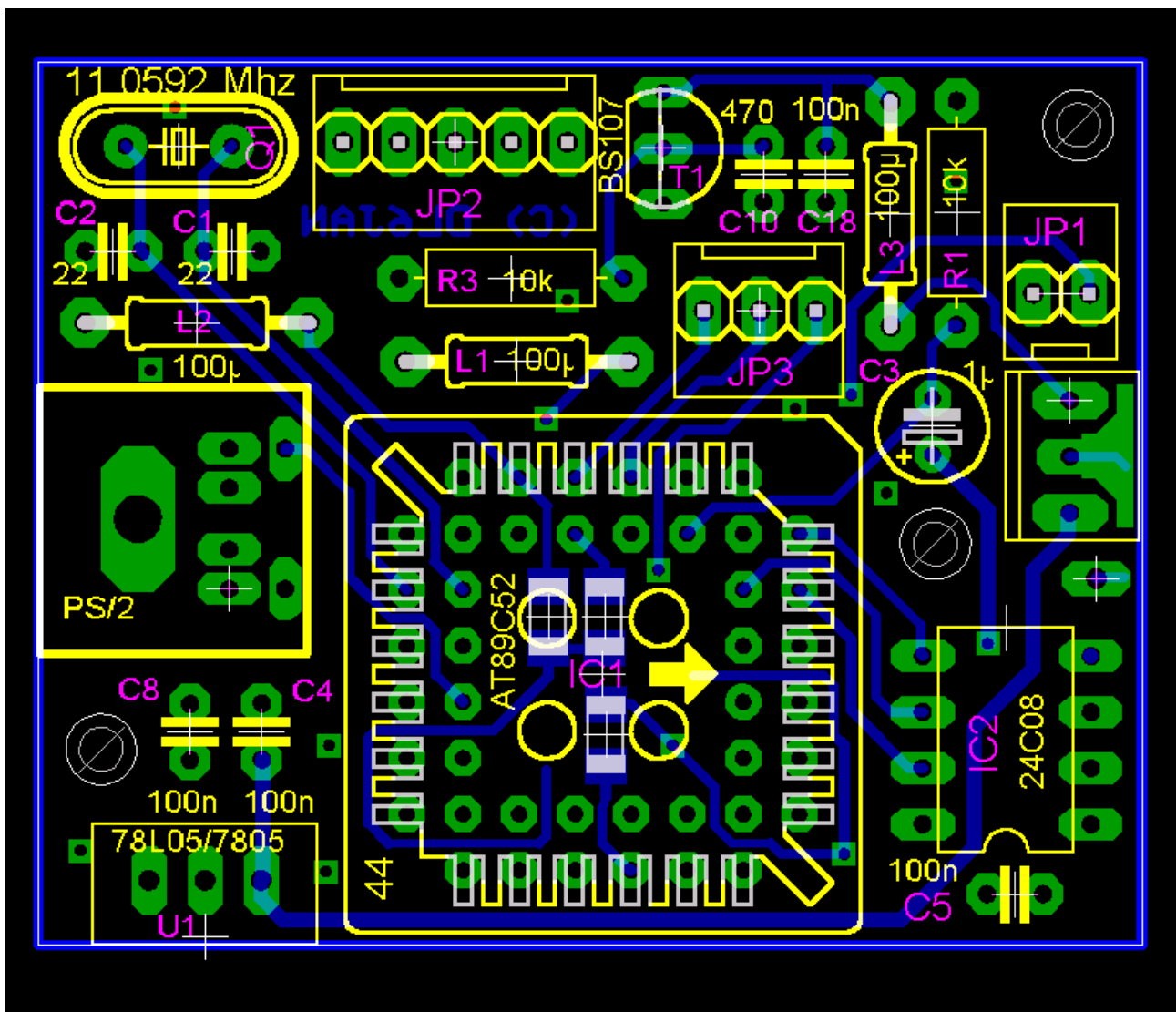
It is best to start with the flat components like resistors, inductors, etc. Continue with crystal, 8-pin IC socket, ceramic capacitors and finally insert PLCC and PS/2 socket, the electrolytic capacitor and the voltage regulator.

Don't forget the plastic spacer between PCB and crystal to avoid short circuits.

Press the PS/2 socket tight to the board when soldering. There should't be any space between PCB and socket.

Check polarity / orientation of the following components carefully :

- 1 $\mu$ F capacitor (plus is directed to the EEPROM)
- voltage regulator 7805 (metal surface is directed to the PCB edge)
- IC sockets (tag), wrong inserted sockets are hard to remove !
- FET BS107 (as shown in the component plan)





In case you use processor output pins for control purposes or for the QRSS modes, precautions should be taken to prevent damaging these pins, for instance an additional transistor stage between the processor and the external circuitry. Some schematics concerning this matter can be found on my webpage or in the PDF manual.

